



Test Report

Model	CVS 2000 "L" integrated on Roll Fed Labelling Machine - SACMI Labelling
Date	23/06/06
Author	Donato Laico / Julien Tudoux
Customer	Sacmi Labelling
Product	PET-Bottle with Roll-Fed Label

Target

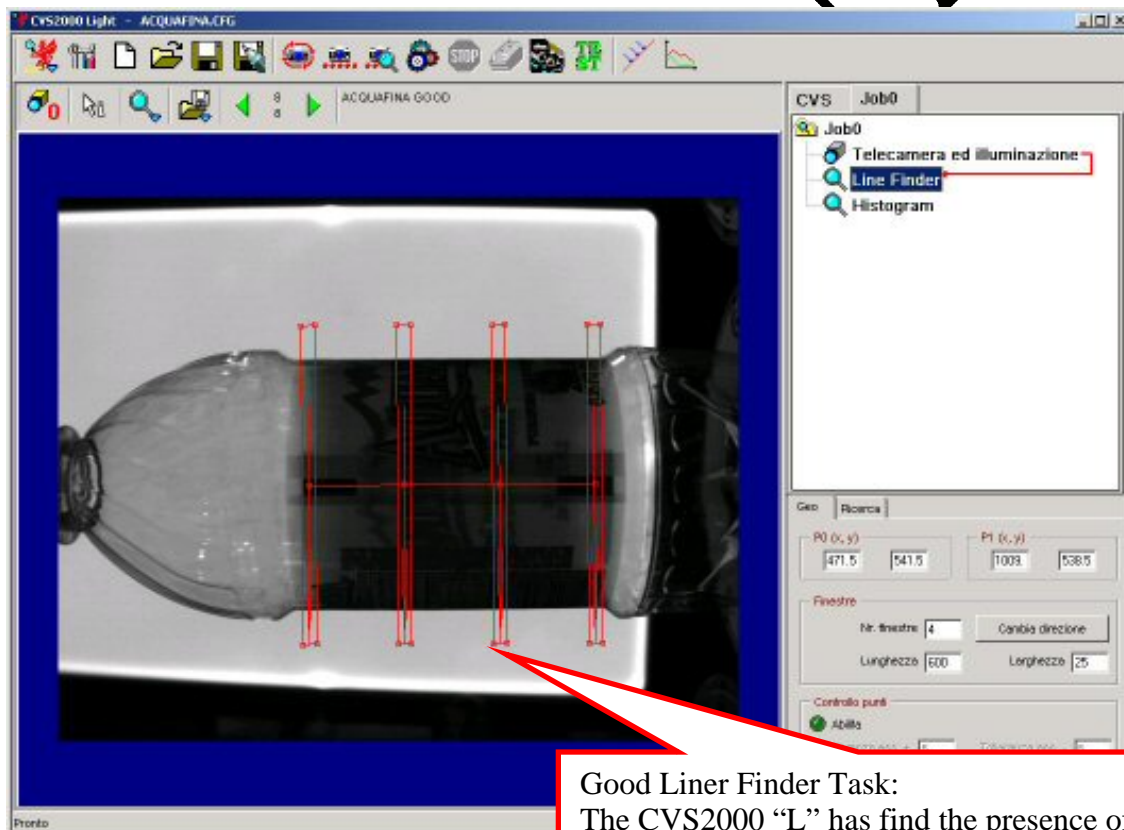
The target of the report is to show how the CVS2000 "L" totally integrated is functioning by checking on the Roll-Fed Labelling machine the error on positioning of the label put on the empty bottle. Max speed: 1100 pz/min.

Results

Creating a configuration with a line finder and an histogram we will check the right positioning of the label from 15 msec to 30 msec (depending on the area of the histogram)

Example 1: half-transparent label:

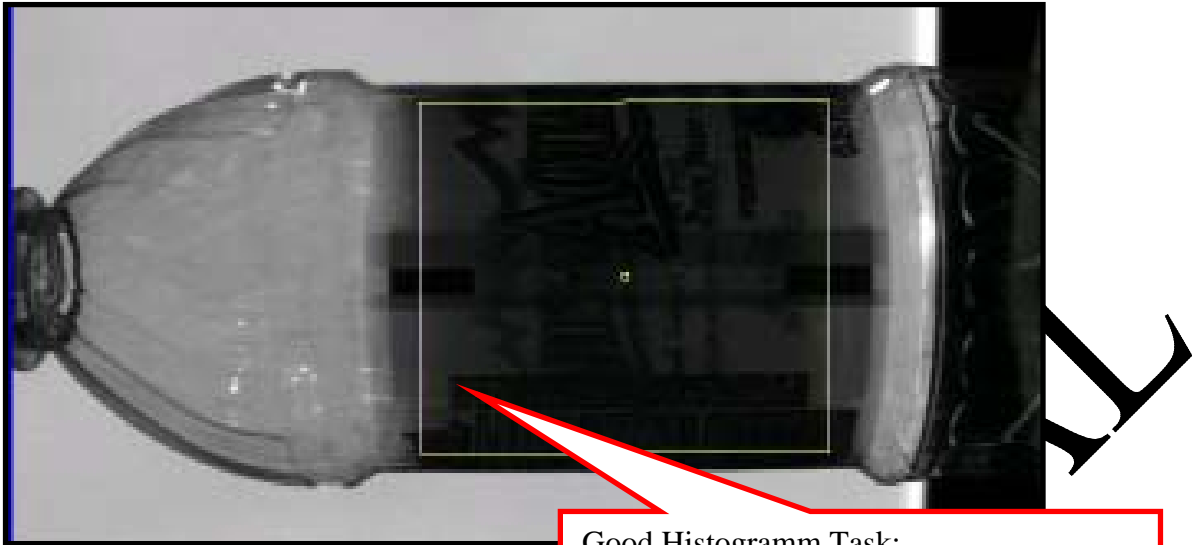
Result of the Liner Finder Task





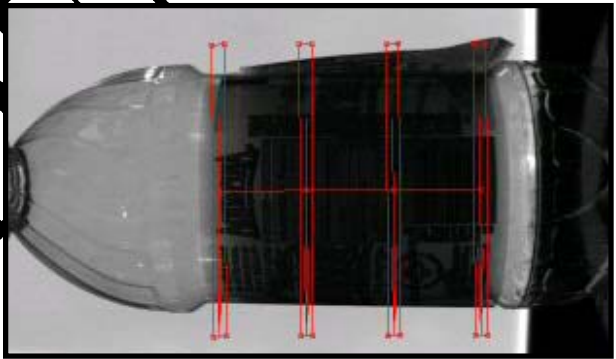
Test Report

Result of the histogram task:

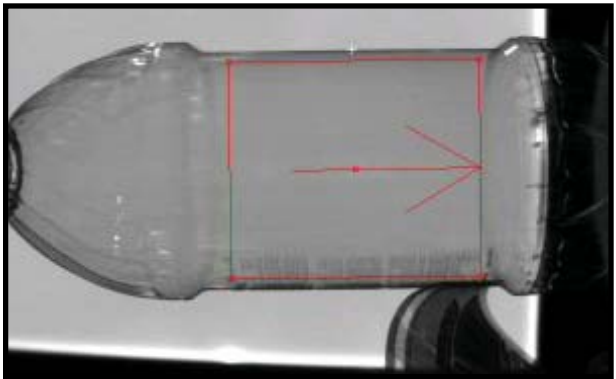


Good Histogramm Task:
The CVS2000 "L" has find the presence of the label on the all bottle body

The line finder will search two transition (the transition of the label); if the label is not correctly positioned the line finder will fail:



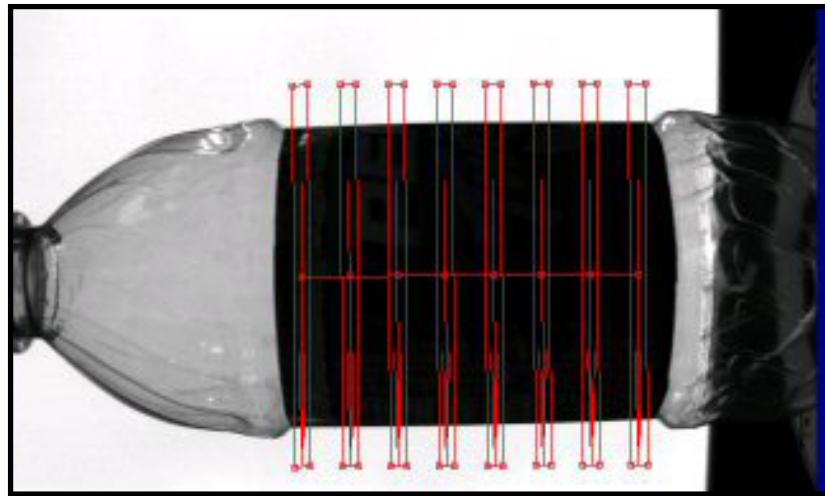
If the label is totally absent will fail the histogram:



CONFIDENTIAL

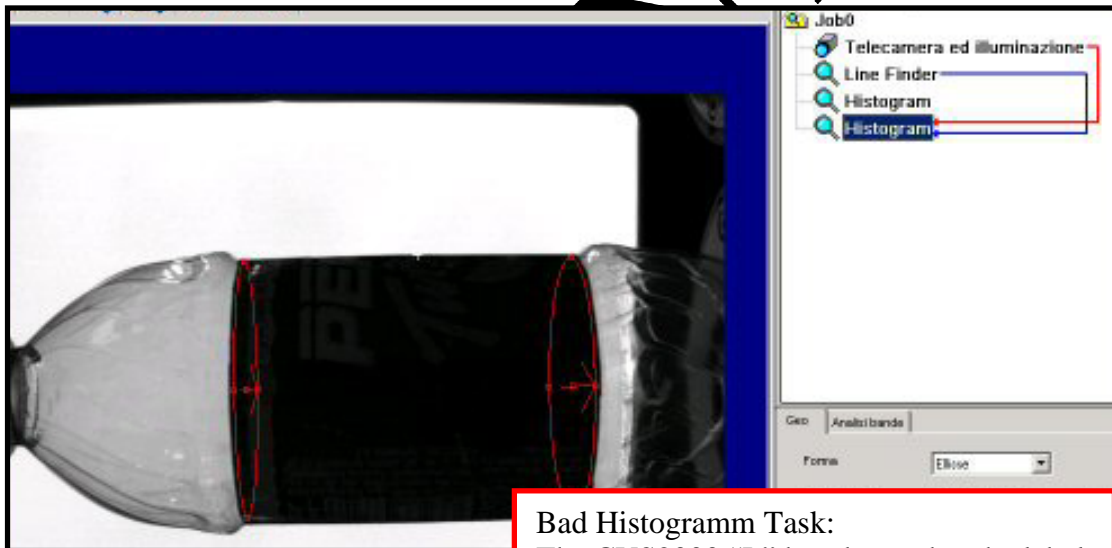


Example 2: not-transparent Label

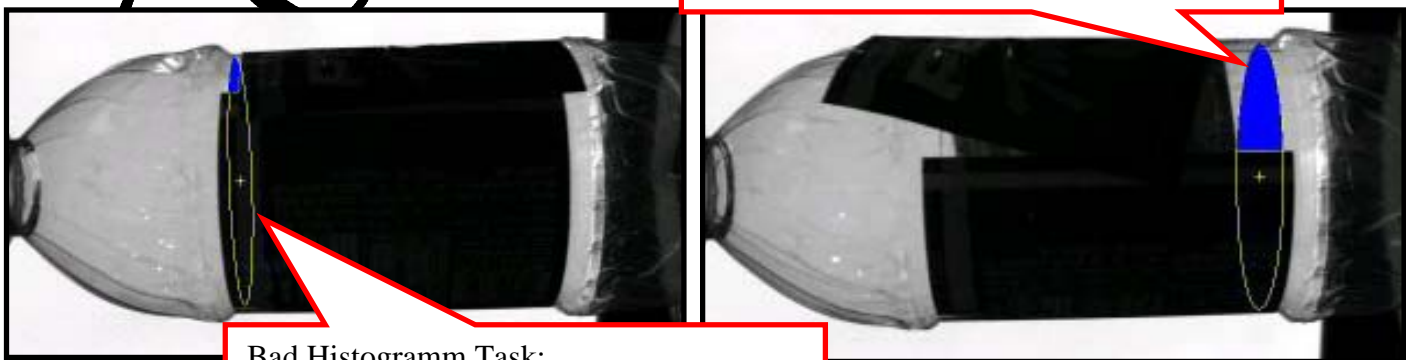


Line Finder:

Histogram: in this case there are 2 histogram to check the presence of the label and the little misplacing of the label:



Bad Histogramm Task:
The CVS2000 "L" has detect that the label is not correctly placed on the label closure



Bad Histogramm Task:
The CVS2000 "L" has detect that the label didn't have a correct position.